



IO-GATE 5G/4G

Einfach im Konzept. Einfach zu bedienen. Plug & Play.

IO-GATE ist leistungsfähig und vollgepackt mit Schnittstellen, die Sie benötigen, um Ihr IIoT-Projekt auf die nächste Stufe zu bringen. Es funktioniert wie ein leistungsstarker SPS WProgrammable Logic Controller) und mit ihren Bord-Edge-Services erhöht IOLGATE Ihre Produktivität und stellt sicher, dass unabhängig davon, wo Sie sind, Sensordaten zur Verfügung stehen, und führt alle die Aufgaben aus, die Sie mit Edge-Diensten ausführen möchten.

Für raue Industrieumgebungen

Das IO-GATE schützt in der Schutzklasse IP65 vor Feuchtigkeit, Wasser und natürlich gegen Staub.



Multisensorschnittstellen

4 IO-Link-Ports, Ethernet für IO-Link-Master oder IP-Kameras und 4 digitale I/O.

Hochgeschwindigkeits-WLAN

LTE/4G und optionales 5G z.B. für Video-Streaming.

Kameraintegration

Schließen Sie Ihre IP-Kamera an und starten Sie Fotos oder Videos.

EdgeManager

Das IO-GATE verfügt über eine Geräteverwaltungslösung, die es dem Benutzer ermöglicht, alles zu verfolgen, was benötigt wird, um das IO-GATE in vollem Umfang im Feld zu bedienen. Es ermöglicht Benutzern auch, Apps herunterzuladen, um ihre eigenen Anwendungen zu ausführen.

Varianten

4GLVersion mit dem leistungsstarken L910C4L WWXLMobilmodul von TelitCinterion.

5GLVersion mit dem modernsten FN980ML Mobilfunkmodul von TelitCinterion.





IO-GATE with 5G

Unlimit Your IO-Link Possibilities

The World's Most Powerful Industrial IoT Gateway

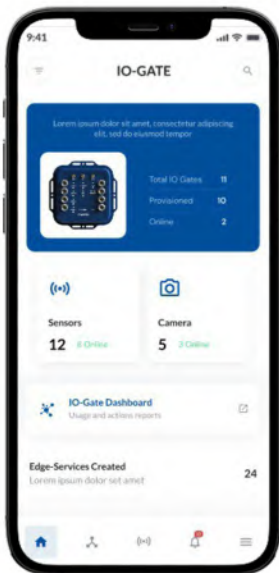
Smart. Powerful. Plug & Play!

IO-GATE is the Smart gateway the Industrial IoT is looking for. it is a versatile industrial-grade device that enables reliable and secure communication between sensors and cloud platforms. IO-GATE is powerful, and packed with interfaces you need to bring your IIoT project to the next level.

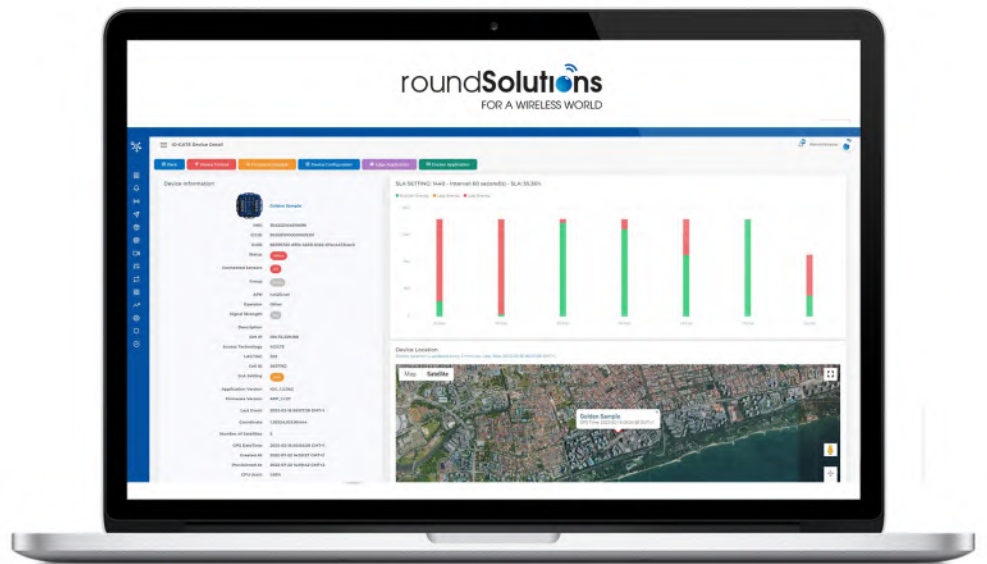
The interesting part is that it works as Plug & Play, costing much less when compared with other traditional OT set ups and therefore reduce all the cabling requirements.

Boost your productivity further with the onboard edge services and no matter where you are, IO-GATE will provide you with your IO-Link sensor data with advanced edge services and innovative device monitoring plus diagnostic tools to get you full control of your devices.

The IO-GATE can support a wide range of applications, such as smart city, agriculture, asset tracking, Smart manufacturing, condition monitoring, pharma and chemical applications, Smart Buildings and industrial automation.



Mobile app



RoSo Web Version

IO-GATE comes with **RoSo Device Management** which simplifies the on-boarding of devices and the management of devices at any scale. IO-GATE connects automatically to the RoSo Device Management on start-up and information from your IO-GATE appears automatically in the dashboard.

RoSo Device manager is very intuitive and user friendly to monitor your data at ease on PC or on the go with our mobile app. You can set alarms with different sensors, see exact location on the map, understand your data from different clear graphs or control other machines all from the same place. You can even monitor your cellular connectivity performance for all your devices and sensors.

IO-Gate works with supported **IP-Cameras** which makes it very easy to see and monitor any sites in real time photos and videos adding so many possibilities and applications. Using our ready SDK you can build your **docker container app** to customise your perfect use case!

IoT projects depend on stable and reliable connectivity that's why IO-GATE comes with **extensive connectivity solutions** to provide you with the best monitoring of your data anywhere any time. Furthermore it features advanced cellular module and globally covered sim with localised profiles to get you the best coverage!

As the world quickly moves to **5G**, IO-GATE takes full advantage of this. It's run by the versatile Debian Linux OS and it comes with powerful embedded hardware that excels at both edge computing and transmittance rates.

Key Features

Connect Thousands of sensors from different manufacturers to the cloud in few minutes!

Extensive edge interfaces (4 IO-Link ports, Ethernet for IO-Link master or IP cameras, 4 digital I/O).

High speed wireless connectivity using 5G/4G. With the optional **IO-GATE private 5G IoT networks** to enjoy best solution for your private 5G campus.

IO-GATE comes with IoT Connectivity Enjoy out of the box connectivity with our exclusive connectivity solutions with network monitoring and diagnostic capabilities.

Supporting Edge functionality so customers can build their own application using reliable SDK and docker container app.

Easy multi-Cloud integration using AWS IoT cloud services or connect to any other local or global cloud providers.

Ready-to-use RoSo Device Management a User friendly and super intuitive dashboard to control all the devices from anywhere using web browser or mobile app.



» Order your Pilot-Kit now and get a special offer in the Exhibition!
(It comes with everything needed and the perfect Connectivity & Cloud solutions)



Interfaces

- 4 IO-Link Ports (M12)
- 4 Digital Inputs (4 pins of the M12 connector)
- 4 Digital Outputs (4 pins of the M12 connector)
- Ethernet Port (M12)
- 3 SMA for Cellular and GNSS
- 12 Status LEDs

Product and Hardware Features

- LTE CAT1/4 Cellular Module or 5G optional
- Simultaneous support of GPS, Glonass, Beidou, Galileo, QZSS
- eSim onboard and Nano SIM Card Holder
- 1GHz ARM Cortex-A8, 512 MB RAM, 4GB Flash (upgradeable to up to 1GB RAM and 16GB Flash)
- 10/100 MB Ethernet port (M12 D-code connector)
- Cryptographic Controller MAXQ1061 Secure Storage, Digital Signature, Encryption, Secure Boot, and TLS/SSL Communication Protocol
- Customized applications on cloud and edge side
- DIN Rail adapted with wall mounting options

Cellular

IO-GATE with 4G module (SET-IOGATE-LE910C1-WWX)

- LTE CAT1/4
- LTE FDD Cat.4, 3GPP release 10 compliant
- LTE FDD Cat.1, 3GPP release 9 compliant
- Up to 150 Mbps DL/50 Mbps UL data rates
- Rx Diversity and MIMO DL 2x2
- Single Rx option
- Simultaneous support of GPS, Glonass, Beidou, Galileo, QZSS

IO-GATE with 5G module (SET-IOGATE-LE910C1-WWX+)

- Up to 5.5 Gbps DL/2.7Gbps UL data rates on 5G
- Standard M.2 (NGFF) data card form factor
- 5G Sub-6 FDD and TDD and mmWave
- SA and NSA 5G Option 3a/3x and Option 2
- 3GPP Release 15
- 4G Category 20, aggregation of up to 7 carriers
- Multi-constellation gpsOne Gen 9 L1/L5 GNSS receiver

Fully programmable OS with well documented SDK
Multiple VPN options available including DMVPN & IPSEC

Cloud

- Protocols: MQTTS – HTTPS
- Ready Cloud Connection for AWS
- Device Management and Ready-to-use Dashboard

Environmental

- Housing:
 - Dimensions: 180 x 180 x 42 mm
 - Weight: 0.808 kg
- Operating Conditions:
 - Ambient temperature [°C] -25...60
 - Storage temperature [°C] -25...85
- Power Supply: 9-32 Volts, min. 4A (M12 connector)
- Power Consumption: 0.5 to 4A
- Protection class III
- Housing material: metal (aluminium 6062)



Certifications

- CE / RED (ongoing)
- FCC/PTCRB and WW (ongoing)

Available for

- EMEA
- USA and Global support

Part-No Pilot-Kit

5G IO-GATE
SET-IOGATE-LE910C1-WWX+

4G IO-GATE
SET-IOGATE-LE910C1-WWX

Pilot-Kit: IO-GATE, Power supply, Antenna, 1 Sensor, 1 Alarm lamp, Sim card and cloud connectivity



C+R Automations- GmbH

Nürnberg Straße 45
90513 Zirndorf

Tel. +49 (0)911 656587-0
E-Mail: info@cractionation.de
www.cractionation.com